



Institute for  
Health Metrics  
and Evaluation

# **Access, Bottlenecks, Costs, and Equity**

Preliminary results from ABCE project in Ghana

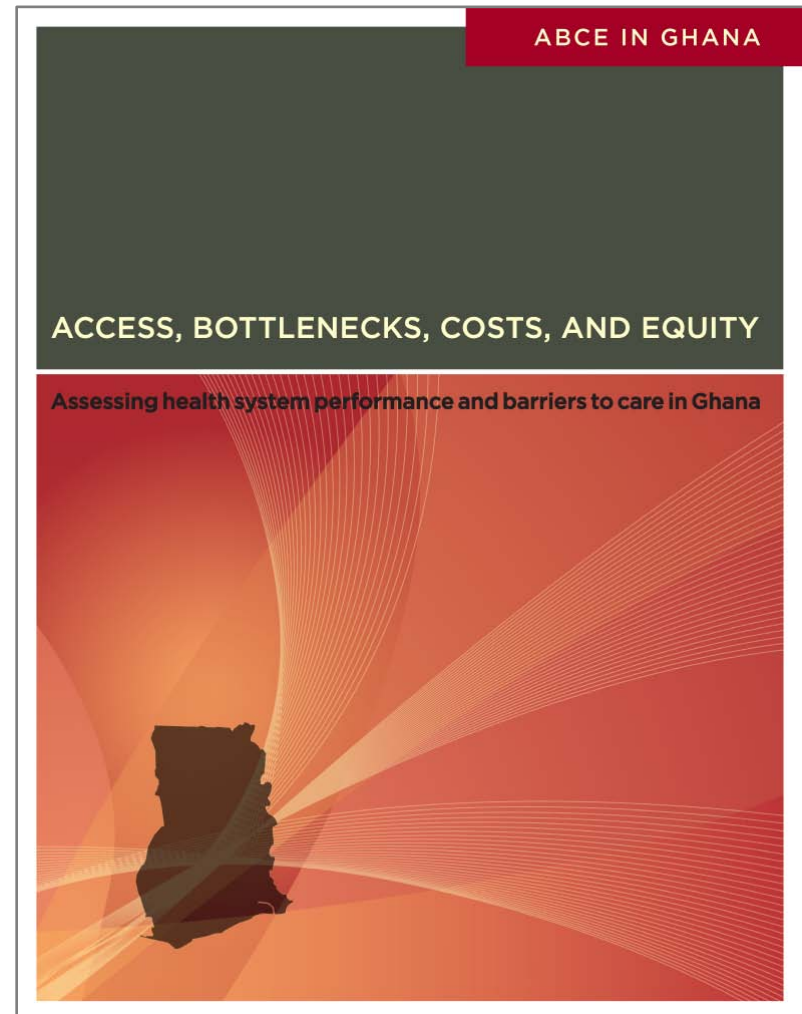
29 April 2013

Mike Hanlon, PhD  
Assistant Professor

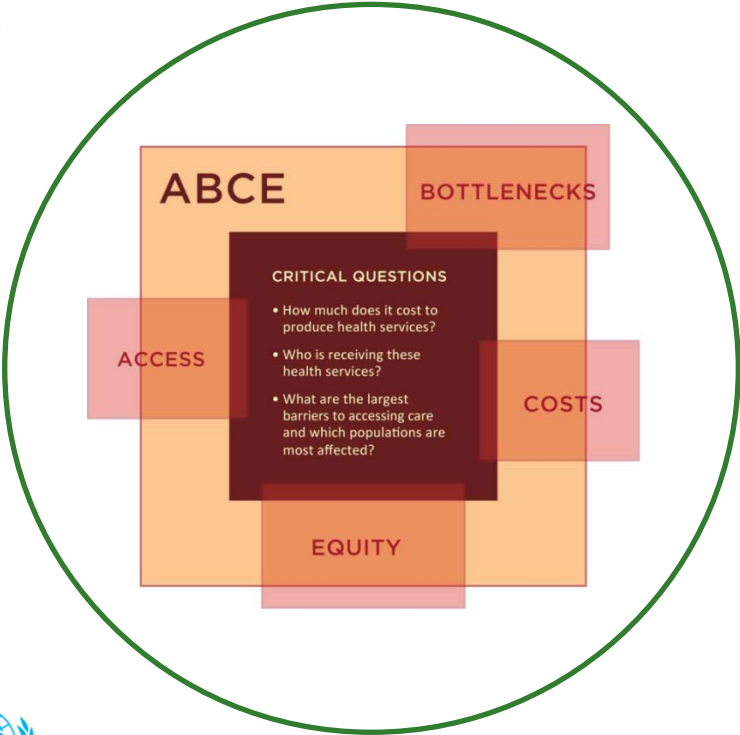
UNIVERSITY OF WASHINGTON

# Agenda

- Project overview
- Preliminary results
  - Expenditure
  - Funding
  - Personnel
  - Stock outs

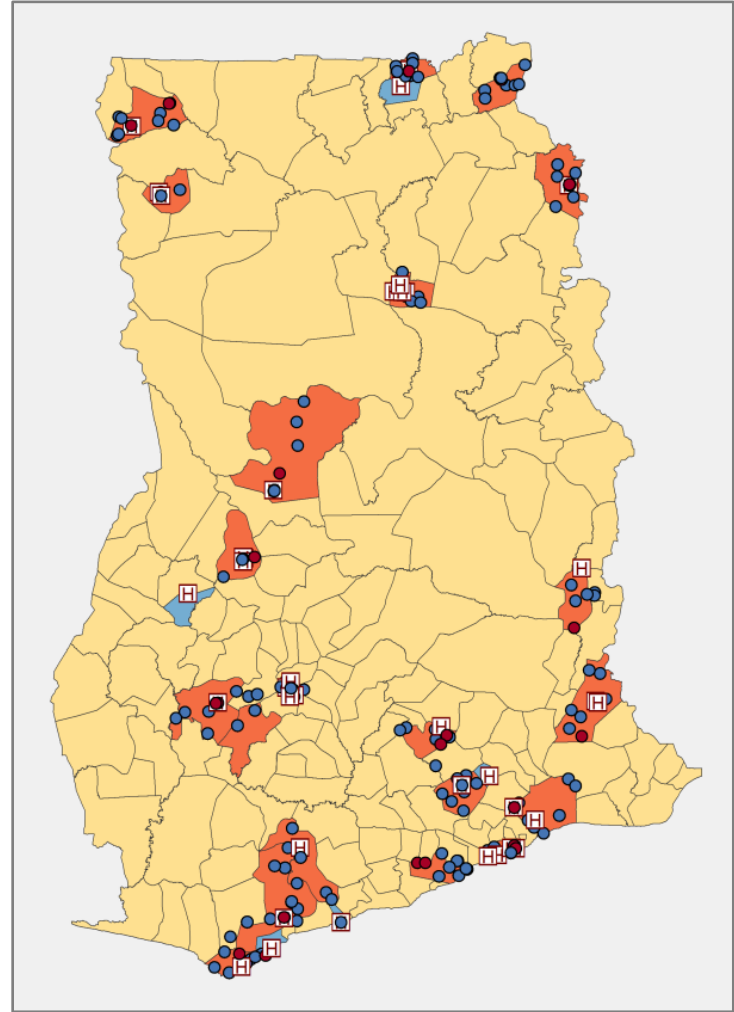


# Partners



# Data

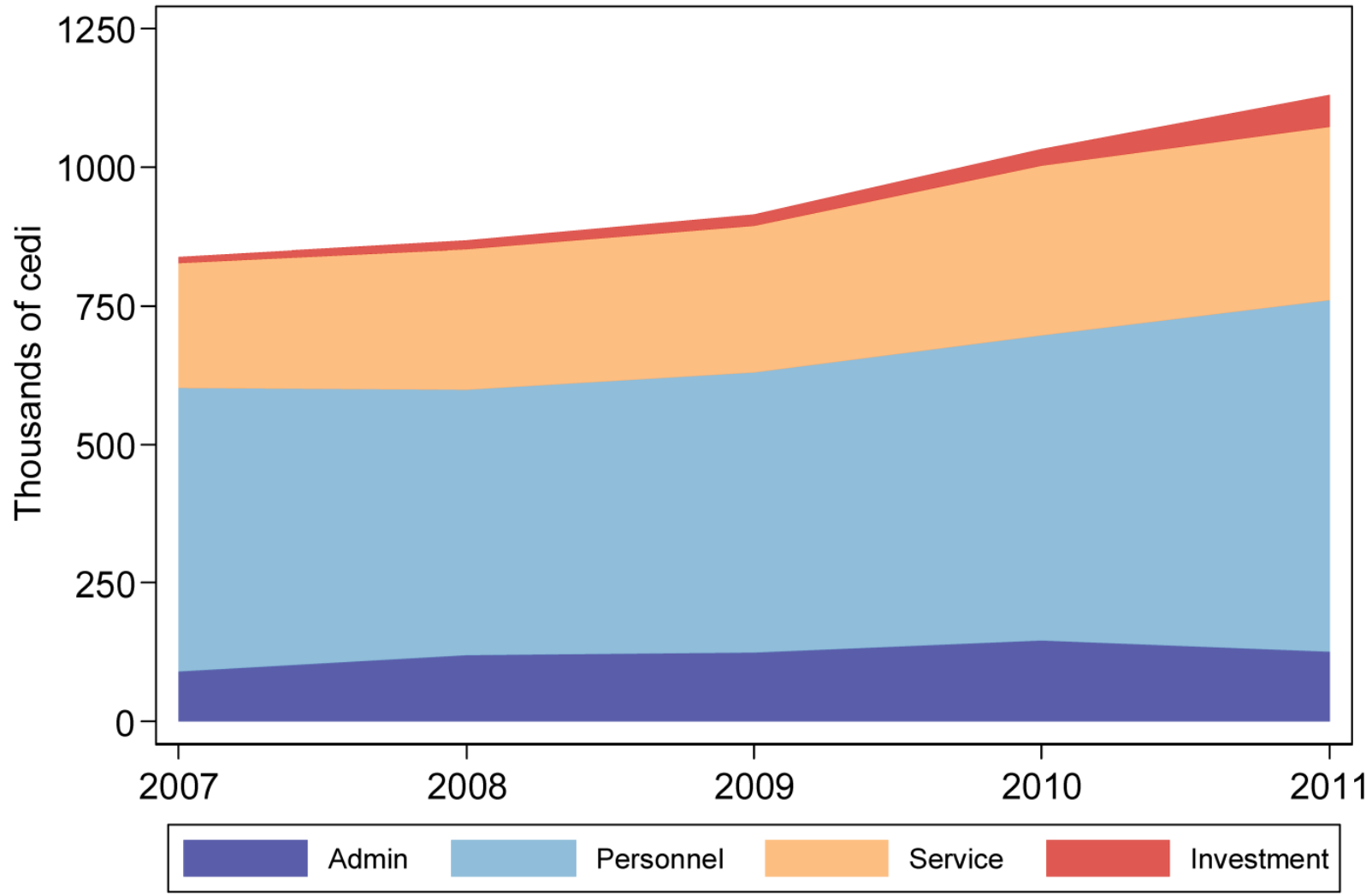
- Used existing data, when possible
- Supplemented with facility-level survey
- Compiled detailed information about each facility



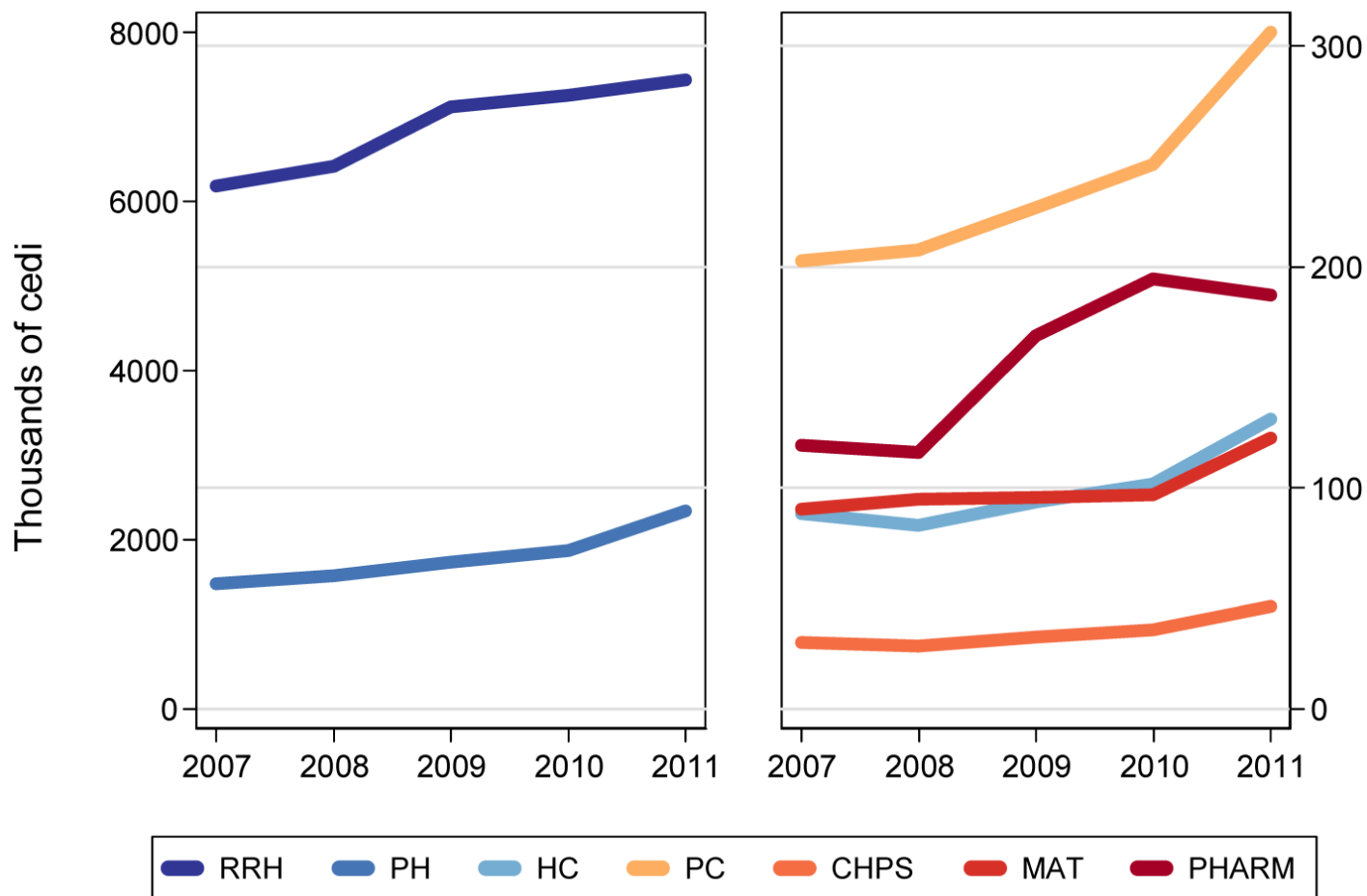
# Facilities Sampled

Level	Category	Number of Facilities	Percent
<b>Platform</b>	Community-based Health Services & Planning (CHPS)	65	30%
	Hospitals	29	13%
	Pharmacies	37	17%
	Health Centers	73	33%
	Maternity Clinics	16	7%
<b>Region</b>	Ashanti	28	13%
	Brong-Ahafo	18	8%
	Central	22	10%
	Eastern	23	10%
	Greater Accra	23	10%
	Northern	21	10%
	Upper East	21	10%
	Upper West	23	10%
	Volta	19	9%
	Western	22	10%
<b>Total</b>		<b>220</b>	<b>100%</b>

# Facility expenditure



# Average expenditure by platform

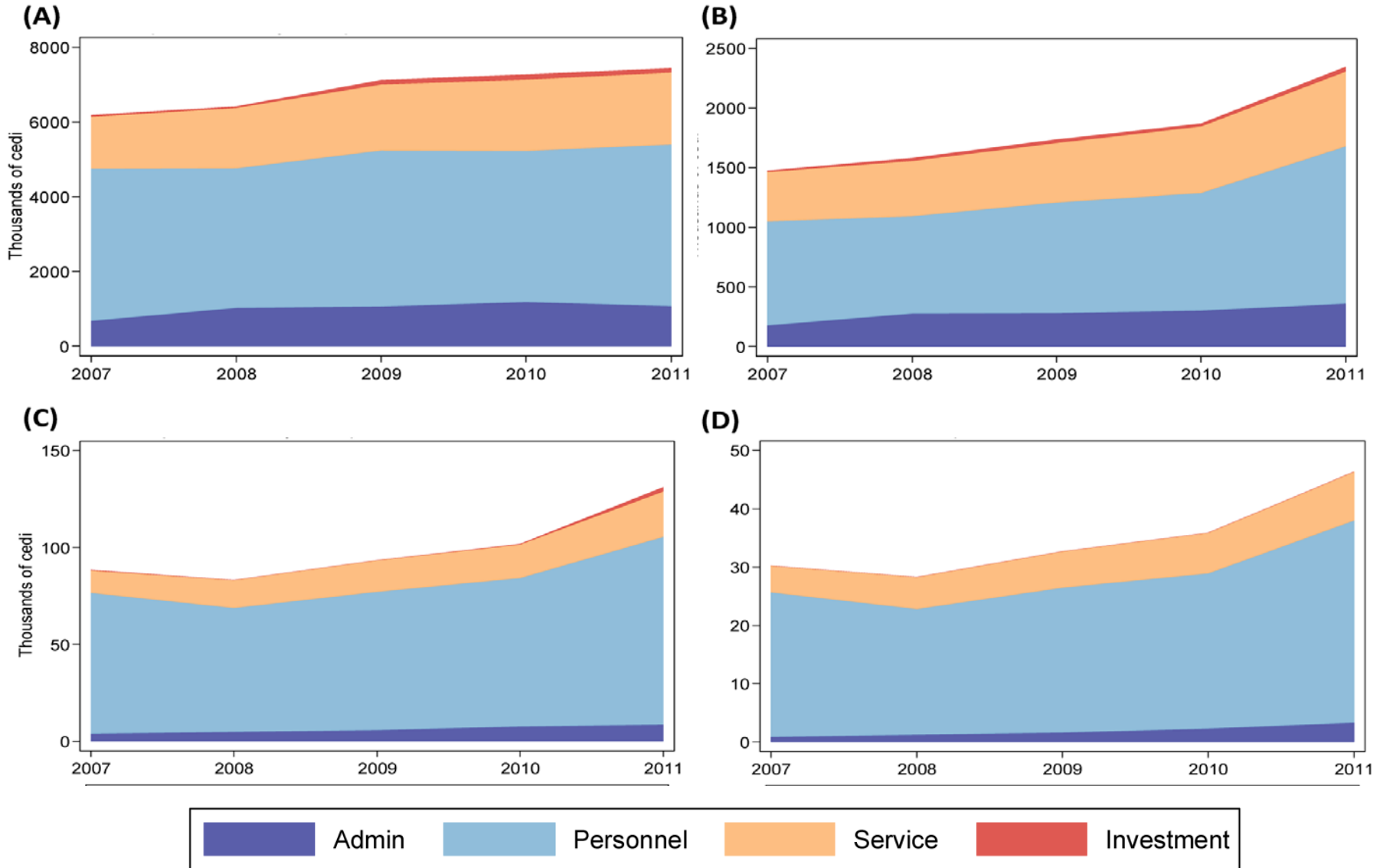


RRH = regional referral hospital  
PH = public hospital

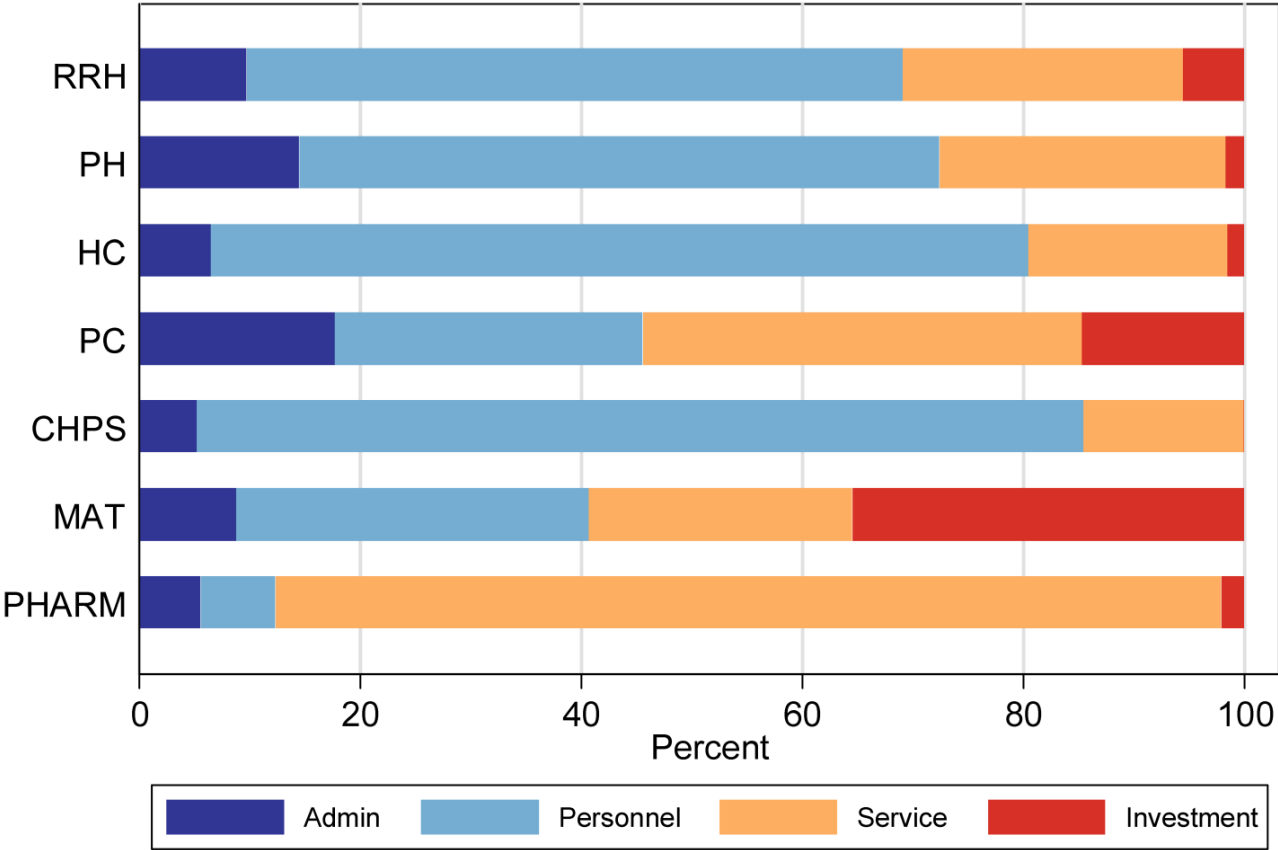
HC = health center  
PC = private clinic

MAT = maternity clinic  
PHARM = pharmacy

# Expenditure by platform



# Composition of expenditure

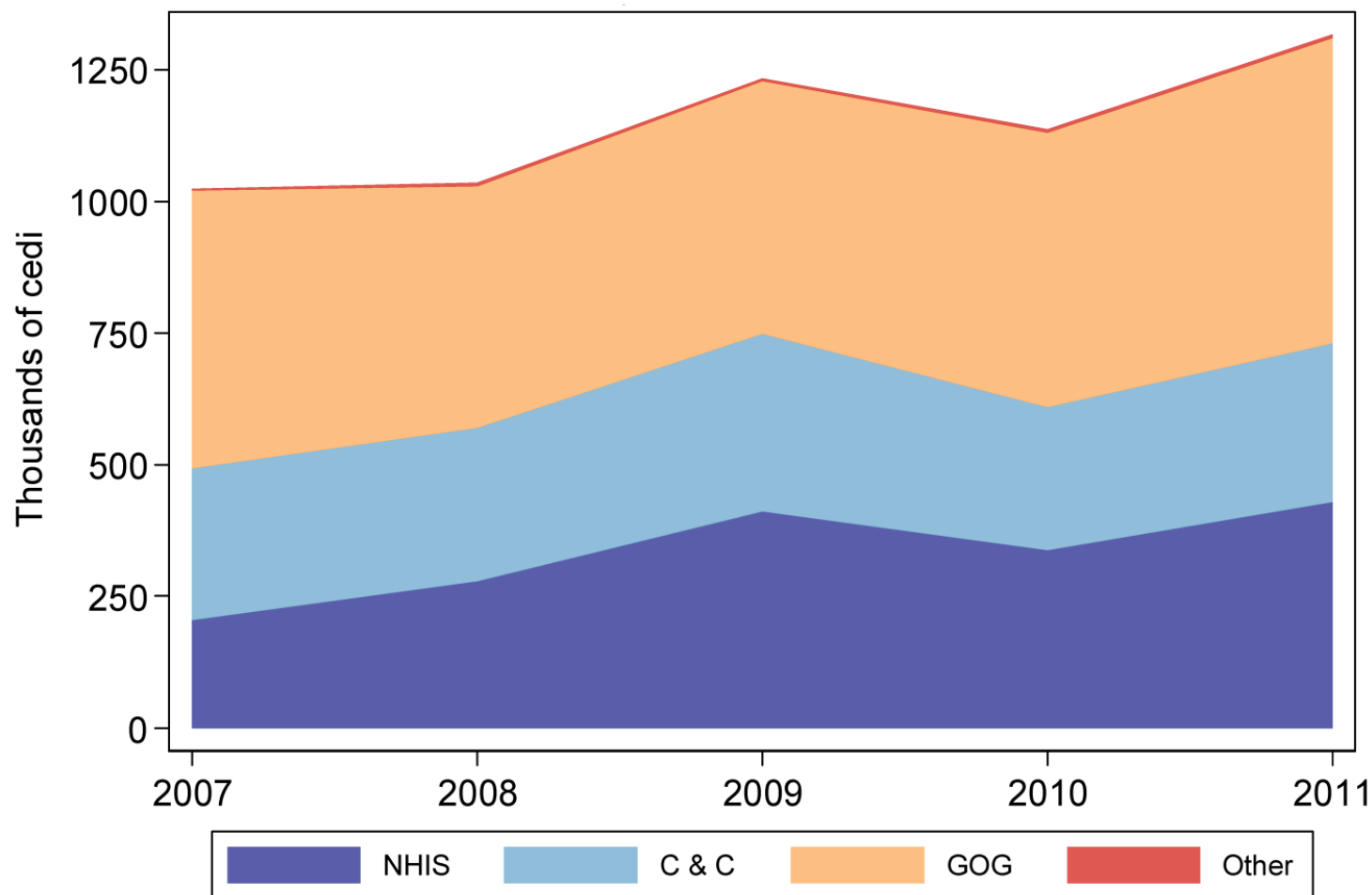


RRH = regional referral hospital  
PH = public hospital

HC = health center  
PC = private clinic

MAT = maternity clinic  
PHARM = pharmacy

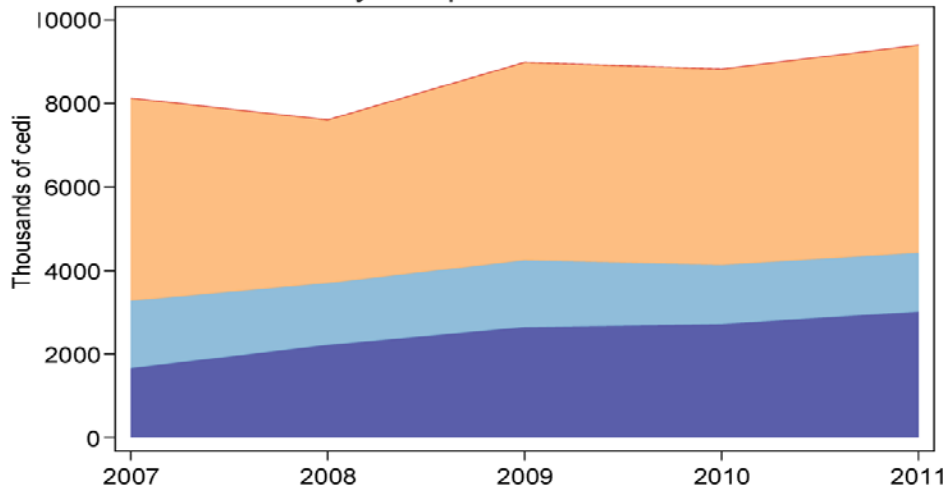
# Sources of funding



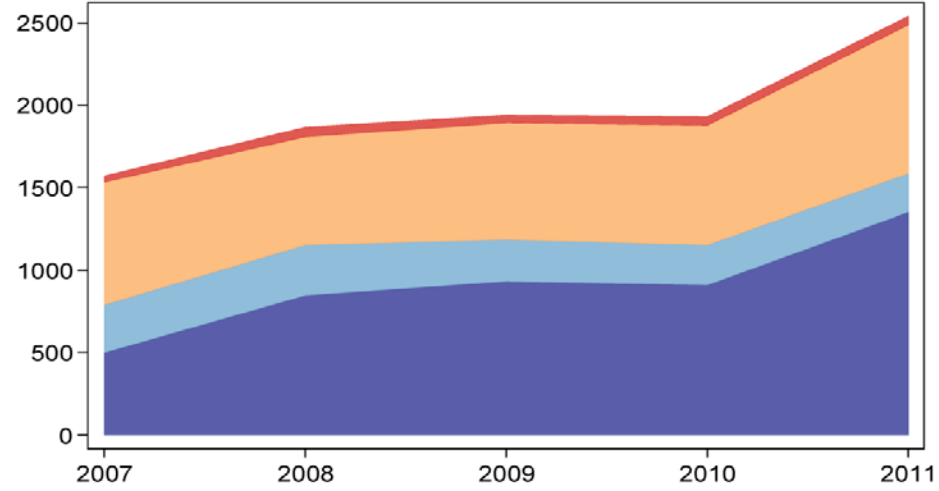
NHIS = National Health Insurance Scheme    GOG = Government of Ghana    C & C = cash-and-carry

# Funding by platform

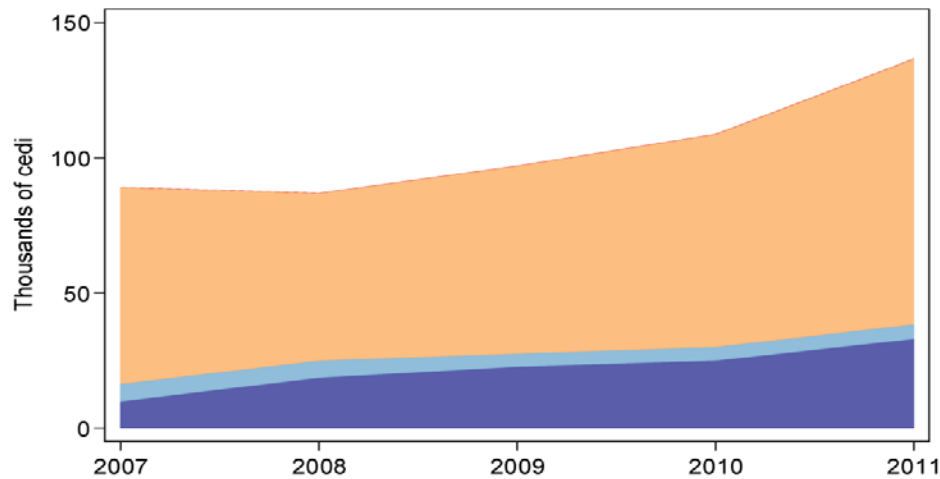
(A)



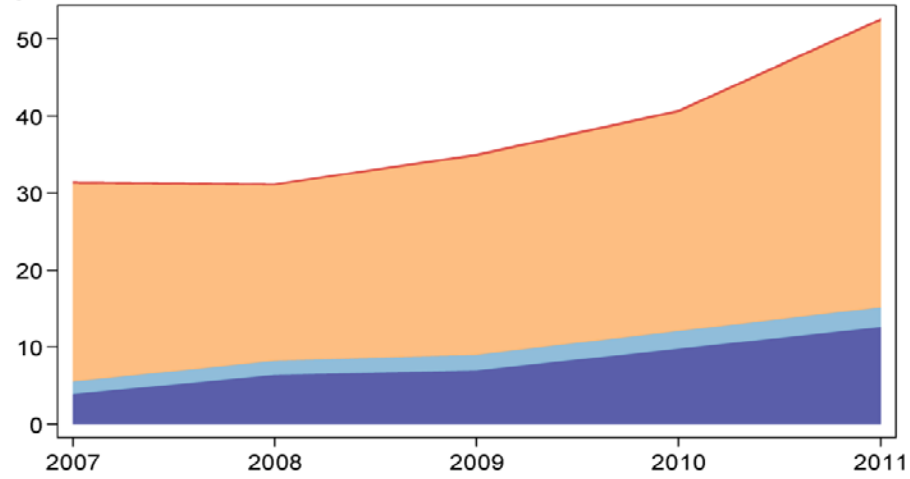
(B)



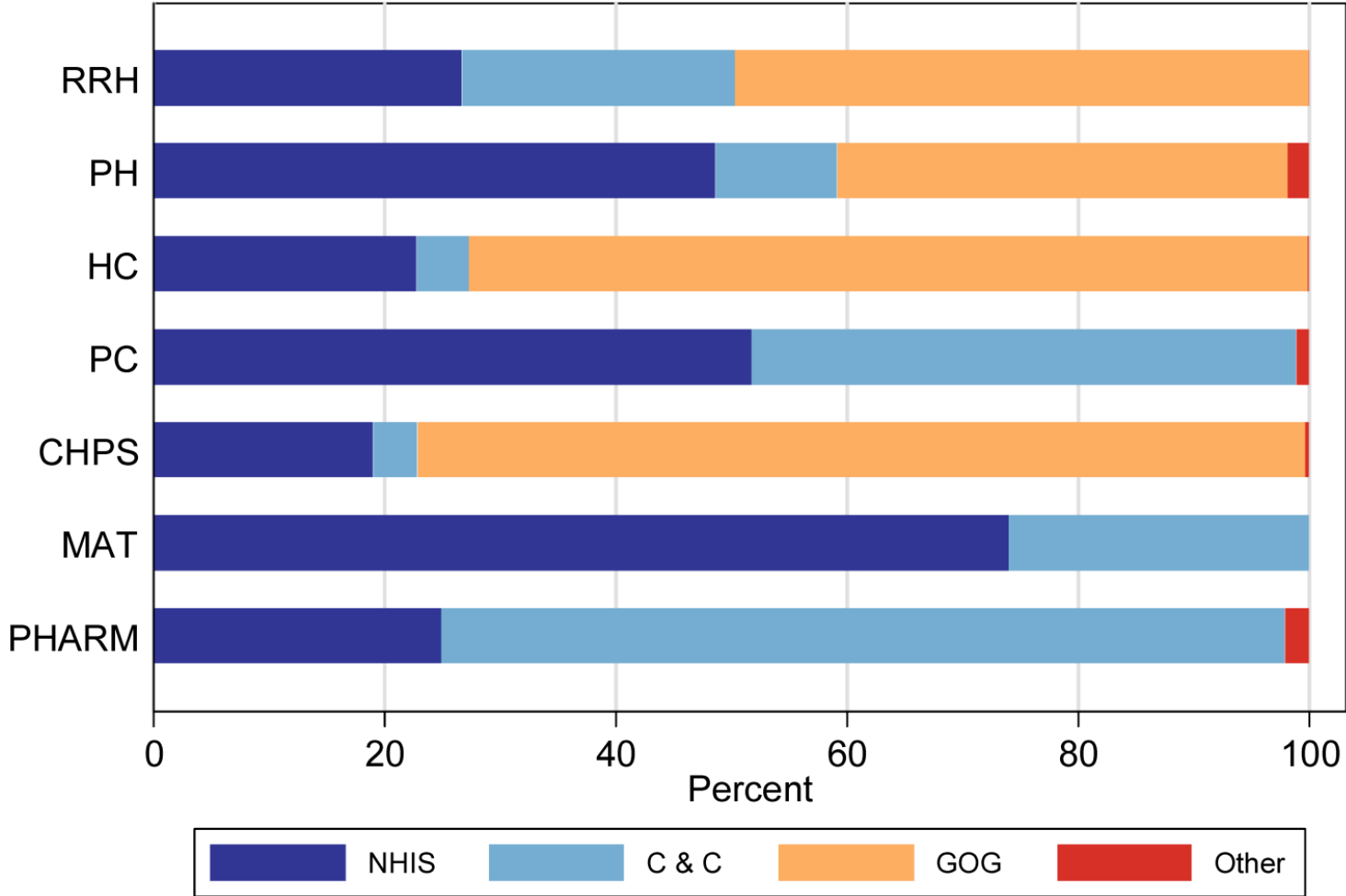
(C)



(D)



# Composition of funding

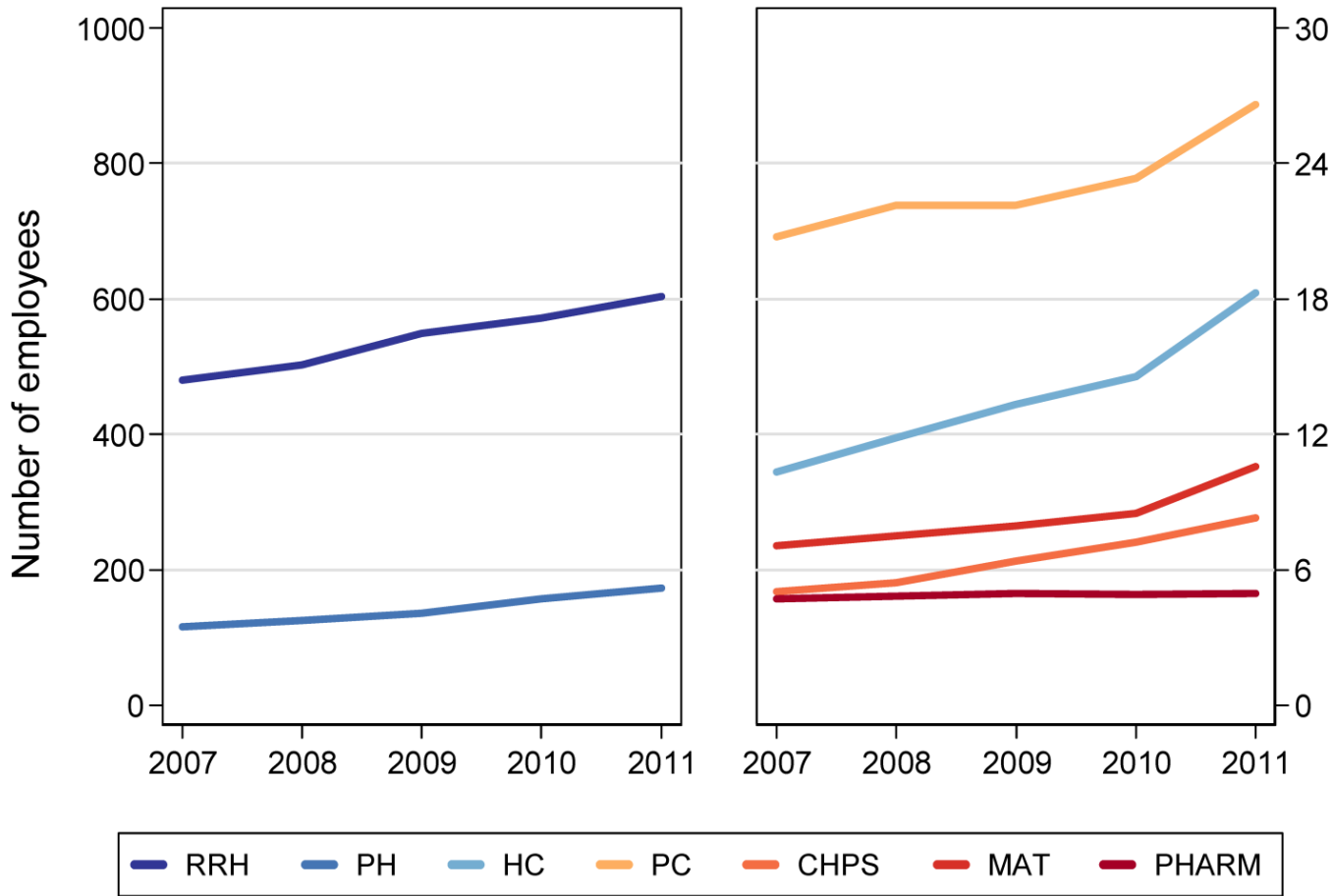


RRH = regional referral hospital  
 PH = public hospital

HC = health center  
 PC = private clinic

MAT = maternity clinic  
 PHARM = pharmacy

# Personnel by platform

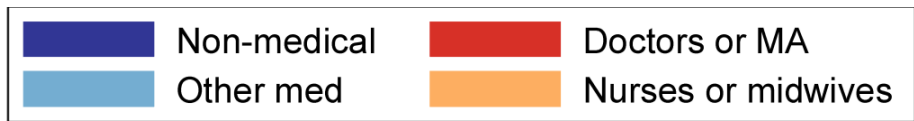
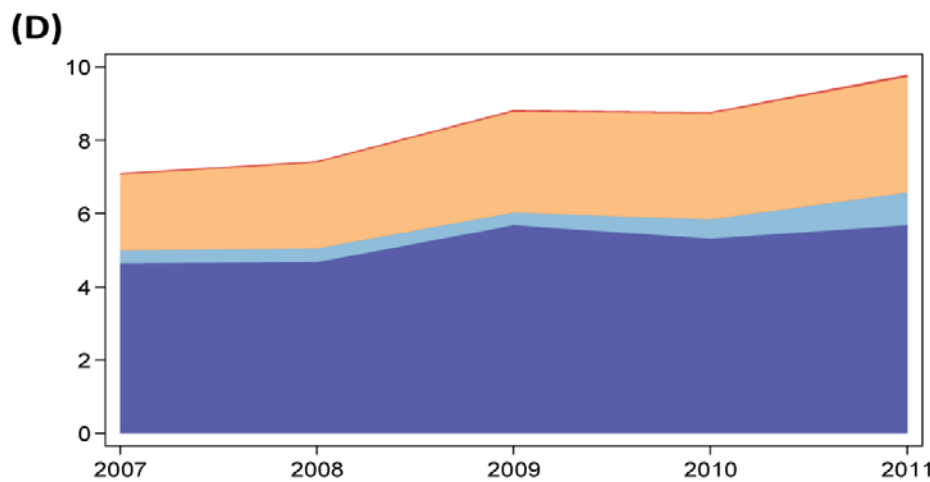
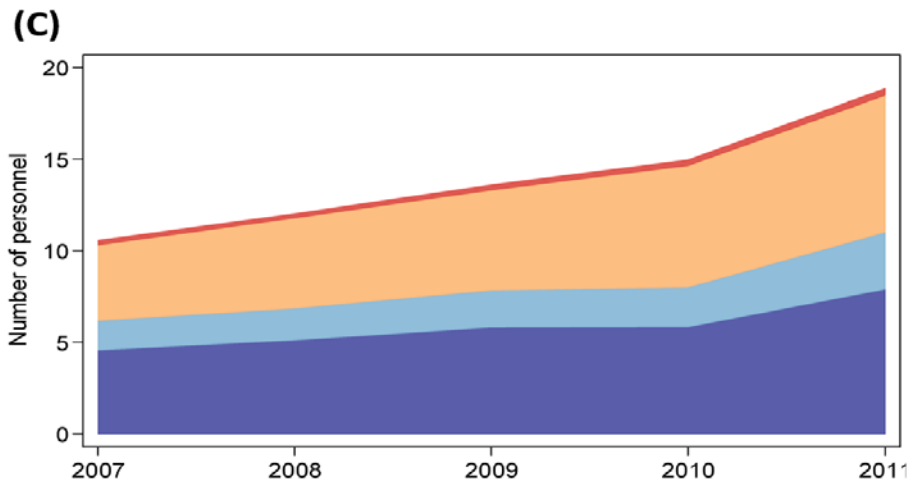
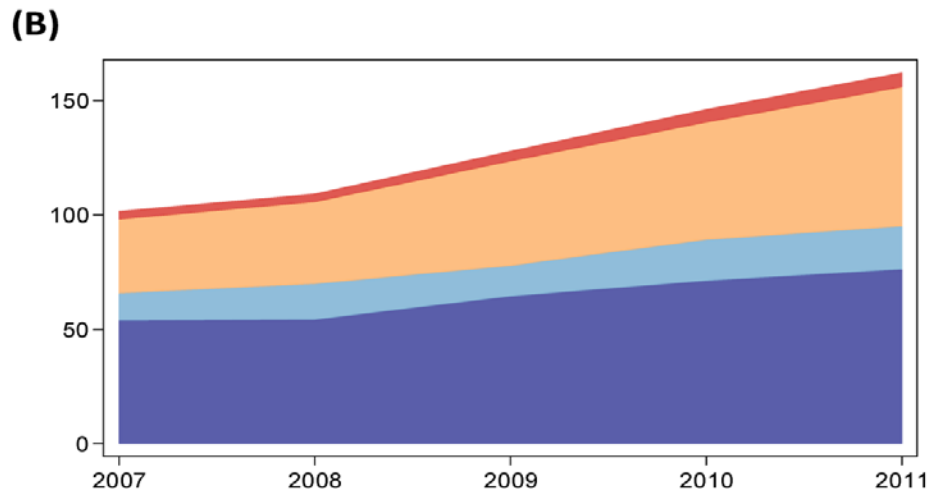
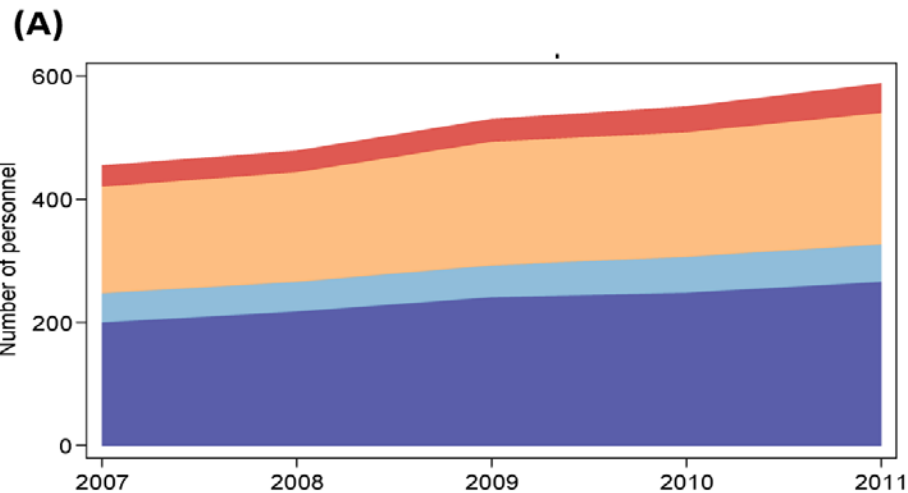


RRH = regional referral hospital  
 PH = public hospital

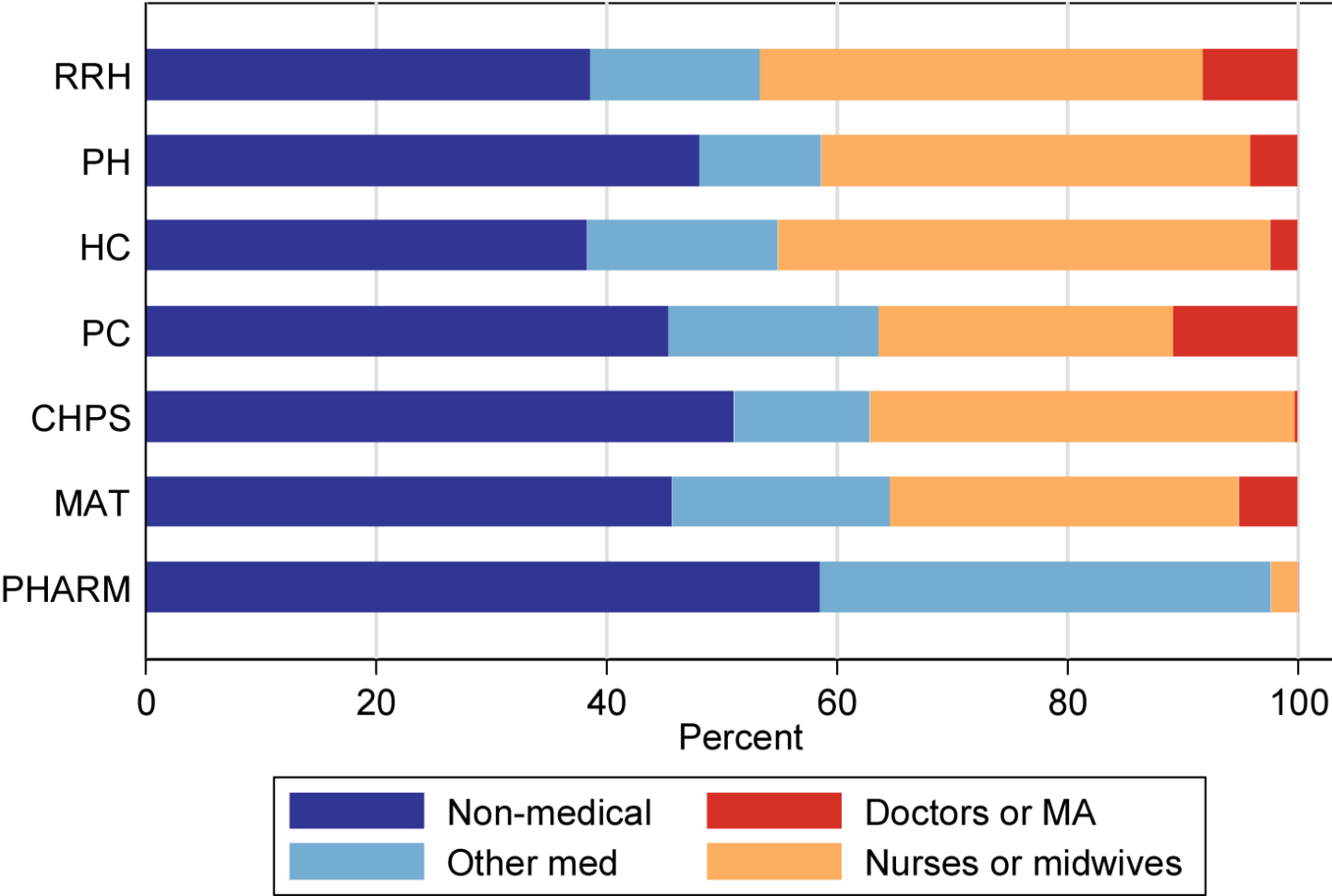
HC = health center  
 PC = private clinic

MAT = maternity clinic  
 PHARM = pharmacy

# Personnel by platform



# Composition of personnel

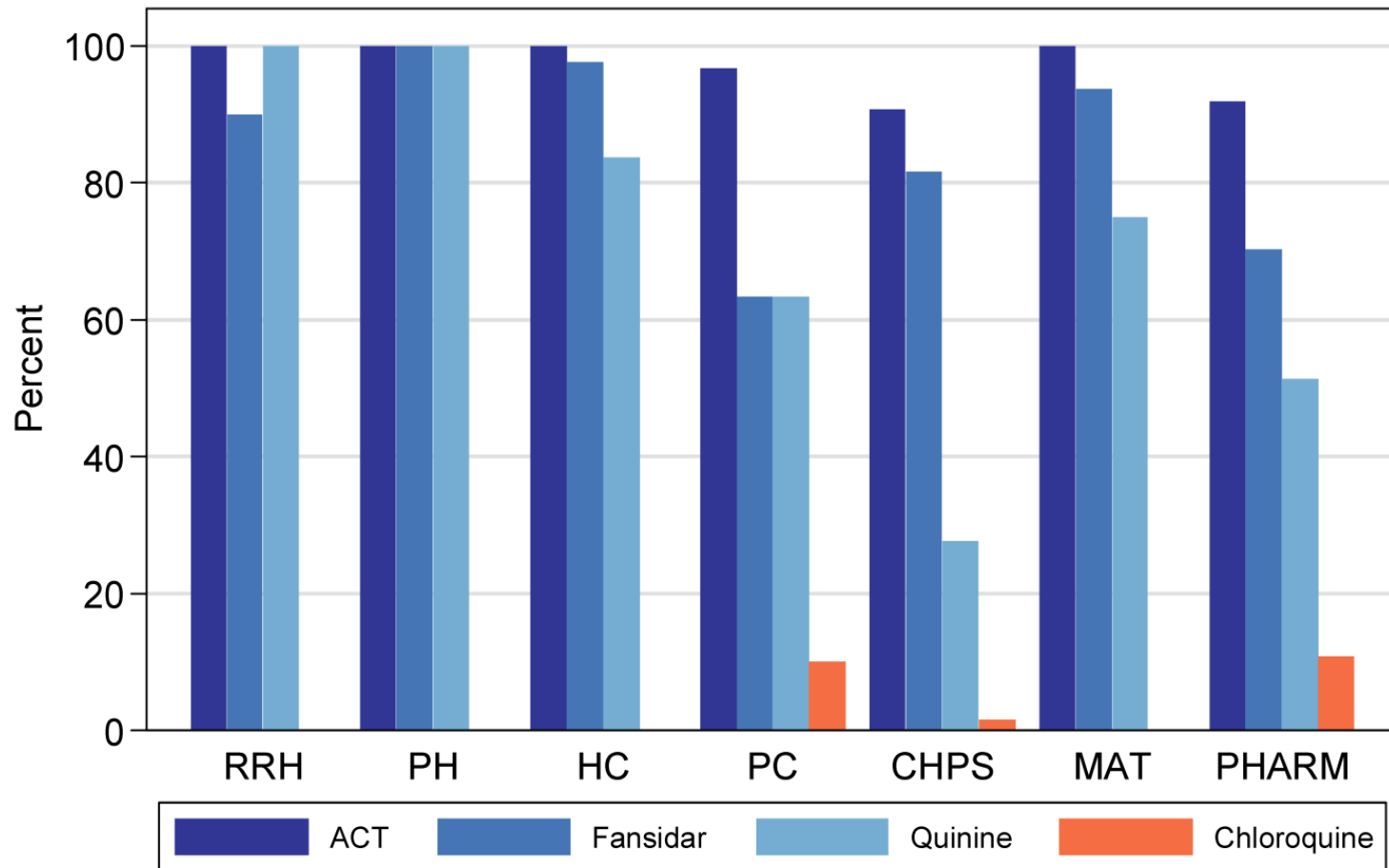


RRH = regional referral hospital  
 PH = public hospital

HC = health center  
 PC = private clinic

MAT = maternity clinic  
 PHARM = pharmacy

# Anti-malarial drugs

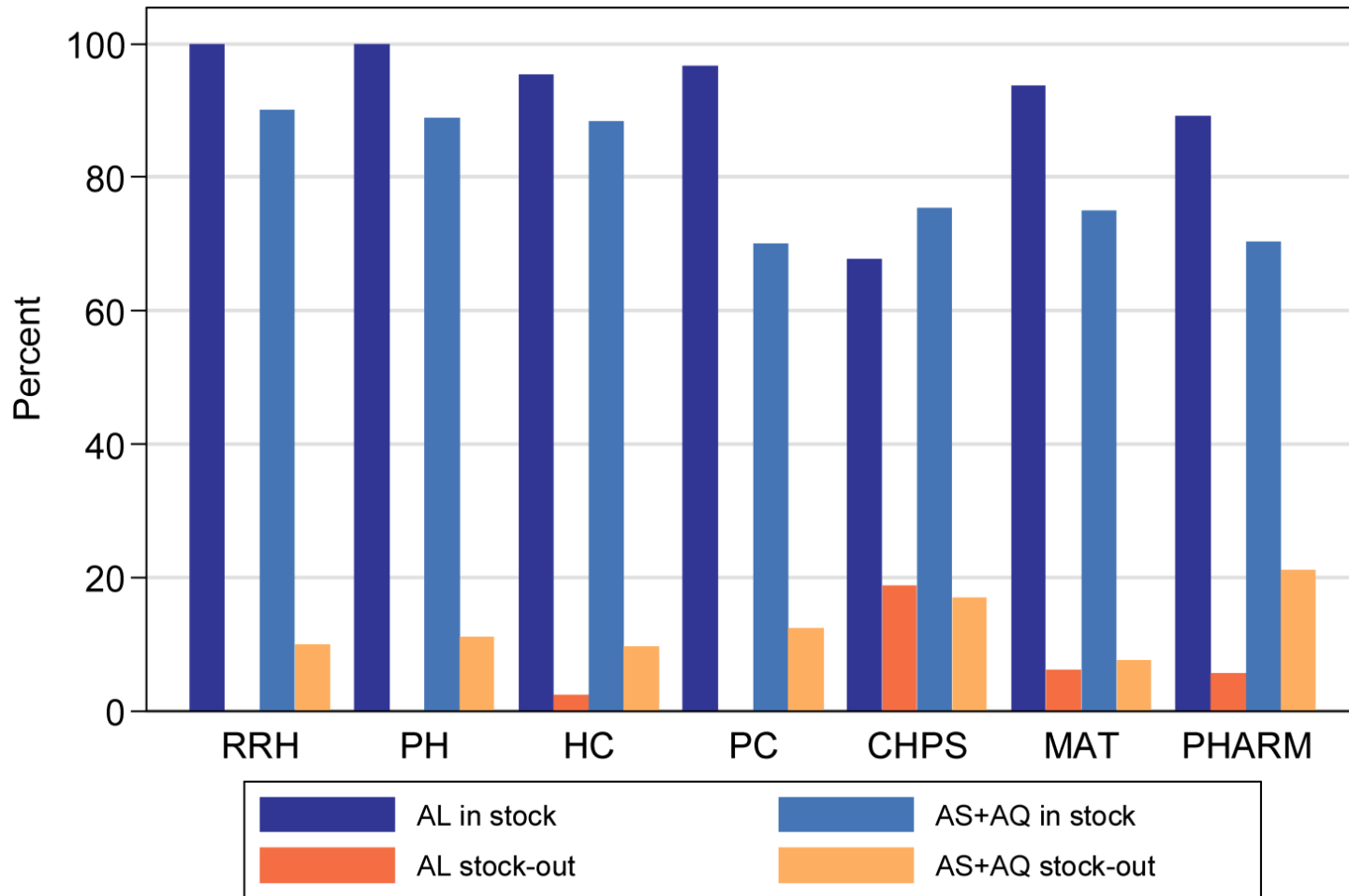


RRH = regional referral hospital  
PH = public hospital

HC = health center  
PC = private clinic

MAT = maternity clinic  
PHARM = pharmacy

# ACT stock outs

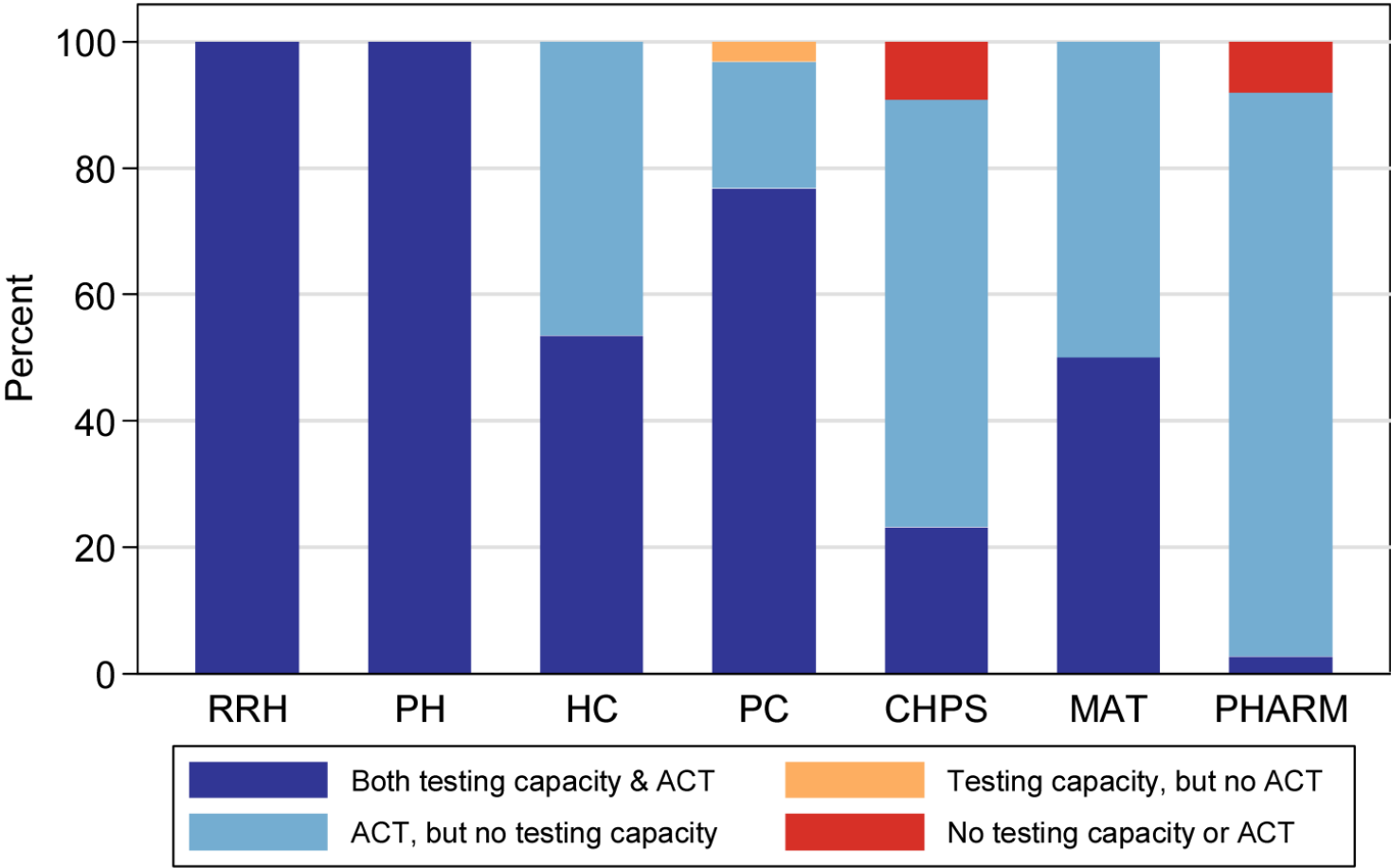


RRH = regional referral hospital  
 PH = public hospital

HC = health center  
 PC = private clinic

MAT = maternity clinic  
 PHARM = pharmacy

# Capacity to test and treat

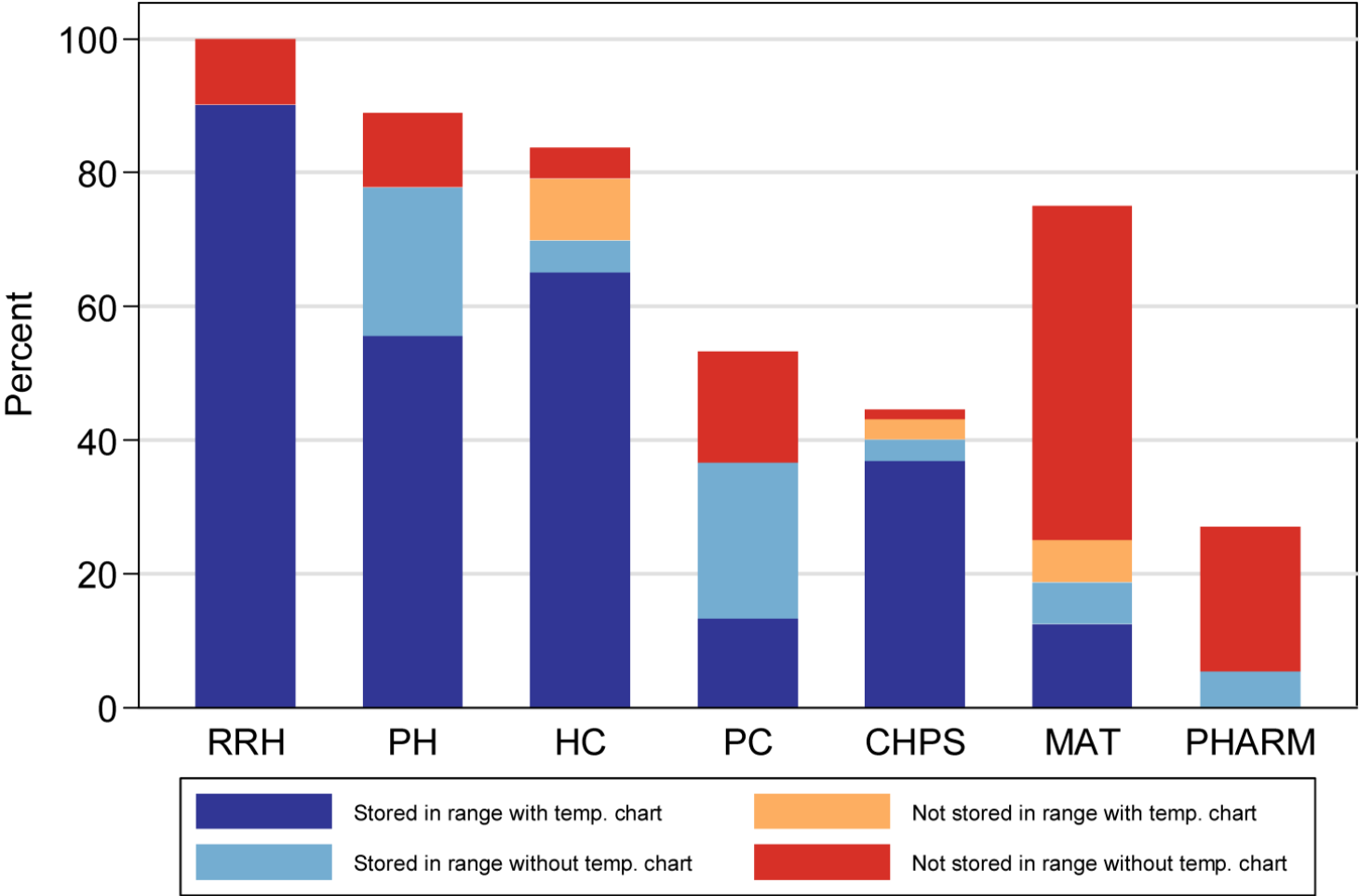


RRH = regional referral hospital  
 PH = public hospital

HC = health center  
 PC = private clinic

MAT = maternity clinic  
 PHARM = pharmacy

# Storing vaccines



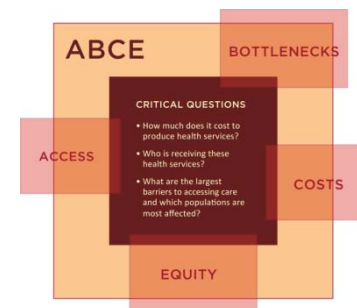
RRH = regional referral hospital  
 PH = public hospital

HC = health center  
 PC = private clinic

MAT = maternity clinic  
 PHARM = pharmacy

# Summary

- Expenditure, funding and staffing have grown since 2007. Composition is dynamic.
- First-line malaria drugs appear widely available. However, performance may vary by facility type.
- Survey contains thousands of variables per facility. Many analyses forthcoming.



# Ongoing and future work

- In-depth analyses of costs and efficiency
- Identify relationships between facility characteristics and service provision
- Understanding demand: link households to facilities

# Thank you

