

April 2012 Health Summit: *2011 POW Review*

1

FIDELIS GEORGE DAKPALLAH
DIRECTOR P.P.M.E. (MOH) ... *EMERIT.*

23 APRIL, 2012
GIMPA EXECUTIVE CONFERENCE
CENTRE

Holistic Performance of 2011 POW

2

The holistic assessment- historical perspective

3

- After shift from the pooled fund (Health fund) to the Multi Donor Budget Support(MDBS) /Sector Budget Support, Performance Appraisal Framework (PAF) agreed btw Gov't. and Donors
- Focus was on selected indicators, some agreed to be the triggers for disbursement by DPs.
- Limitation was that this focused on very specific issues to the detriment of broader perspective of sector performance.

- Following a few years of performance assessment this way, the health sector sought a tool that would measure performance using most of the sectorwide indicators as possible , the holistic assessment tool.

The holistic assessment tool

5

- Specific to the Health Sector.
- Relative to the POW2007-2011 (tailored to the SMTDP 2010-2013)
- Aims to provide very brief but well-informed, balanced and transparent assessment of performance.
- Assesses progress towards meeting objectives of the POW
- Attempts analysis of factors for high performance and not so high performance and possible corrective measures.

f.g. dakpallah

- Results feed into the MDBS at national level.

The holistic assessment tool

6

- Performed for the first time in 2008
- Dry-run of the HSMTP 2010-2013 indicators
- assessment based on available data and information

- Annual priorities and targets identified .
- Analysis based on
 - the milestones of the medium term POW
 - Sector-wide indicators
 - Annual POW
 - Annual budget
 - MOH annual Financial statement.

process

8

- In-house team compiled report based on annual review of 2011[BMC (-subdistrict,district, regional and national in the case of GHS),Agency, inter-agency, and Partners]
- Some follow-up visits by in-house team to clarify issues in coming out with draft report.
- Oversight committee provides guidance to the in-house review team.

Assessment

9

- Three stepped :
 - Assessment of indicators and milestones
 - Assessment of goals/objectives
 - Assessment of the whole sector

Categories are two.

1. Annual holistic assessment (on those indicators that are available annually)
2. Periodic holistic assessment .. The indicators got annually together with census and surveys based indicators such as DHS;MICS etc

Sector score 2008-2011

10

	2008	2009	2010	2011
GOAL 1 – IMR, U5MR, MMR	n/a	n/a	n/a	n/a
GOAL 2 – HIV, Guinea Worm	0	0	+1	+1
GOAL 3 – Equity	+1	0	+1	+1
THEMATIC AREA 1 – Health Lifestyle, W&S	+1	-1	n/a	n/a
THEMATIC AREA 2 – Health, reproduction, nutrition	+1	+1	+1	+1
THEMATIC AREA 3 – Capacity development	0	+1	+1	0
THEMATIC AREA 4 – Governance and financing	+1	+1	+1	0
SECTOR SCORE	+4	+2	+5	+3

How did we end up at +3?

11

HOLISTIC ASSESSMENT STEP 1-3

First step

12

- **Each indicator**

- **Score +1 if:**

- ✦ Target was met regardless of trend
 - ✦ Trend was positive

- **Score 0 if:**

- ✦ Trend was within 5% positive or negative range
 - ✦ No previous data

- **Score -1 if:**

- ✦ Trend was negative and below target
 - ✦ No data was available

- **Each milestone**

- ✦ **+1** if evidence of realisation of milestone
 - ✦ Otherwise **-1**

Holistic assessment – Goal 1

13

- Goal 1 has only survey indicators
- In 2011, there were no milestones for Goal 1

Holistic assessment – Goal 2

14

Goal 2: Reduce the excess risk and burden of morbidity, disability and mortality especially in the poor and marginalized groups

	2010	Target	2011	Trend	HA
HIV prevalence among pregnant women 15-24 years	1.5%	<1.8%	1.7%	13.3%	+1
Incidence of Guinea Worm	8	<70	0	-100%	+1
Milestone: Elimination status of Guinea Worm and polio maintained					+1

Holistic assessment – Goal 3

15

Goal 3: Reduce inequalities in health services and health outcomes

	2010	Target	2011	Trend	HA
Equity: Geography, services (supervised deliveries)	1.90	1.80	1.67	-11.8%	+1
Equity: Geography, resources (nurse:population)	2.03	2.00	1.75	-13.8%	+1
Equity: NHIS, gender (Female/Male member ratio)	-	-	1.38	-	0

Holistic assessment – TA 1

16

- Thematic Area 1 has only survey indicators
- In 2011, there were no milestones for TA 1

Holistic assessment – TA 2

17

Thematic Area 2: Health, Reproduction and Nutrition Services

	2010	Target	2011	Trend	HA
% children 0-6 months exclusively breastfed	-	n/a	-	-	-
% deliveries attended by a trained health worker	49.6%	55.6%	55.8%	12.4%	+1
Family planning acceptors	24.1%	n/a	25.6%	6.2%	+1
% pregnant women attending at least 4 antenatal visits	71.1%	74.6%	71.3%	0.3%	0
%U5s sleeping under ITN	-	50%	-	-	-
% children fully immunized (proxy Penta 3 coverage)	87.4%	89.0%	88.1%	0.7%	0
HIV clients receiving ARV therapy	40,575	65,914	59,007	45.4%	+1
Outpatient attendance per capita (OPD)	0.94	0.85	1.07	14.8%	+1
Institutional Maternal Mortality Ratio (IMMR)	164	170	174	6.3%	-1
TB treatment success rate	87.0%	88.0%	85.3%	-1.9%	0
Milestone: 50% of district hospitals equipped with Comprehensive EmOC equipment					-1
Milestone: Universal coverage of ITN/Ms achieved					-1

Holistic assessment – TA 3

18

Thematic Area 3: Capacity Development

	2009	Target	2010	Trend	HA
% population within 8 km of health infrastructure	-	-	-	-	-
Doctor:population ratio	11,491	10,500	10,034	-12.7%	+1
Nurse:population ratio	1,489	1,000	1,240	-16.7%	+1
Milestone: Revised staffing norms and deployment plan developed and implementation begun					-1
Milestone: Leadership and management in-service training initiated					-1

Holistic assessment – TA 4

19

Thematic Area 4: Governance and Financing

	2010	Target	2011	Trend	HA
% total MTEF allocation to health	15.1%	15.0%	13.1%	39.7%	-1
% non-wage GOG recurrent budget allocated to district level and below	46.8%	50	55.3%	18.2%	+1
Per capita expenditure on health (USD/capita)	28.64	28.00	35.00	22.2%	+1
Budget execution rate (Item 3 as proxy)	94.0%	>95%	82.1%	-12.7%	-1
% of annual budget allocations to item 2 and 3 disbursed to BMC by end of year	-	42%	89.8%	-	+1
% population with valid NHIS membership card (active members)	33.7%	65.0%	33.4%	-0.8%	0
Proportion of claims settled within 12 weeks	-	60.0%	-	-	-1
% IGF from NHIS	79.4%	70.0%	85.0%	7.1%	+1
Milestone: Community mental health strategy developed					-1

Second Step

20

- Indicators and milestones were grouped into Goals and Thematic Areas
- The sum was calculated

Summary Goal 1-3

21

GOAL 1	
IMR	n/a
U5MR	n/a
MMR	n/a
Under 5 prevalence of low weight for age	n/a
Total Fertility Rate	n/a
Goal 1 total	n/a
GOAL 2	
Milestone: Elimination status of Guinea Worm and polio maintained	+1
HIV prevalence	+1
Guinea Worm	+1
Goal 2 total	+3
GOAL 3	
Equity – Poverty (U5MR)	n/a
Equity – Geography (supervised deliveries per region)	+1
Equity – Geography (nurses per region)	+1
Equity – Gender (NHIS female/male ratio)	0
Equity – Poverty (NHIS wealth quintile)	n/a
Goal 3 total	+2

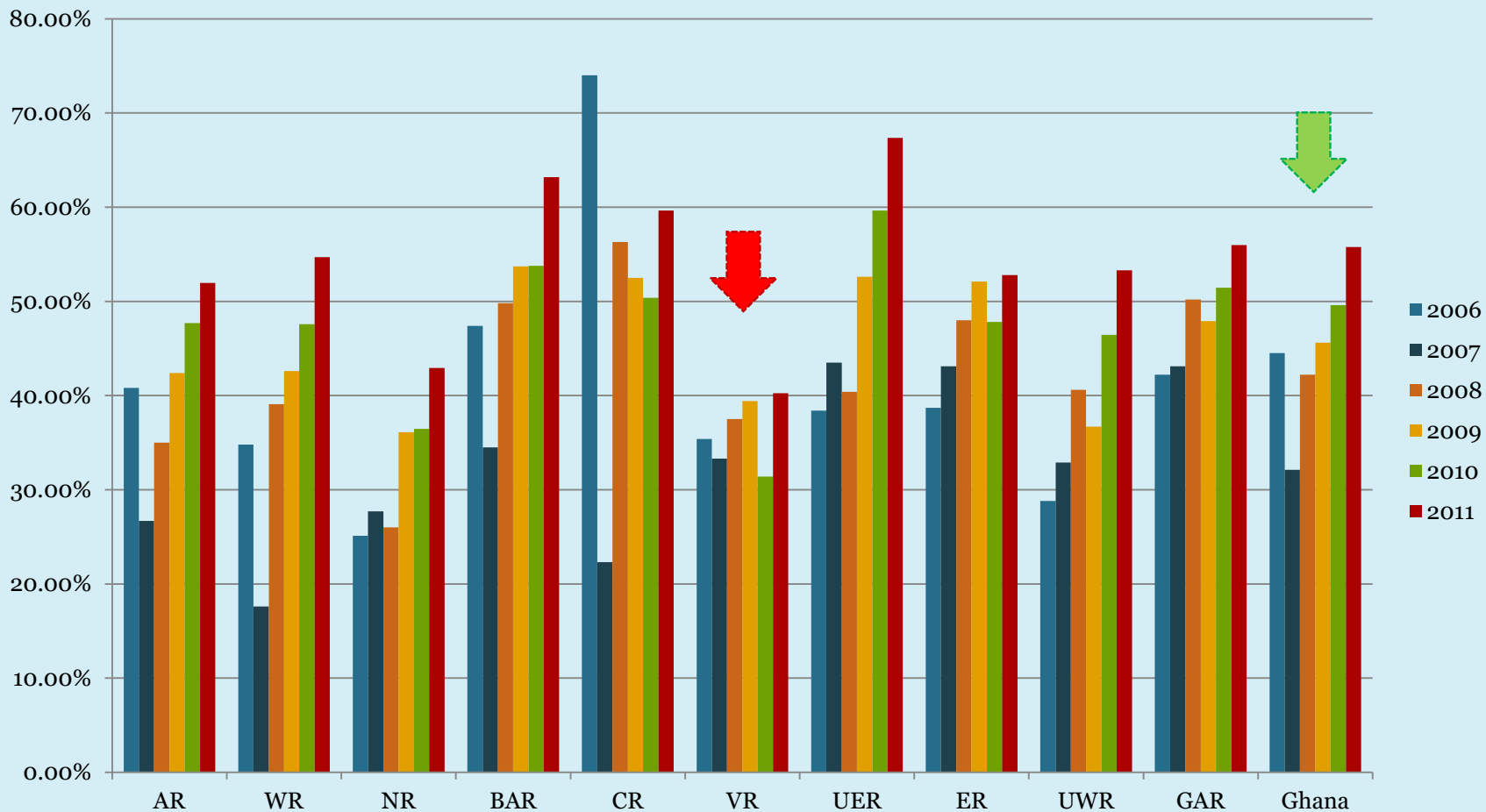
Summary Thematic Area 1-2

22

THEMATIC AREA 1	
% households with sanitary facilities	n/a
% households with access to improves source of drinking water	n/a
Obesity in adult population	n/a
Thematic Area 1 total	n/a
THEMATIC AREA 2	
Milestone: 50% of district hospitals equipped with Comprehensive EmOC equipment	-1
Milestone: Universal coverage of ITN/Ms achieved	-1
% children 0-6 months exclusively breastfed	n/a
% supervised deliveries	+1
Family Planning acceptors	+1
ANC 4+	0
%U5s sleeping under ITN	n/a
% children fully immunized (proxy Penta 3 coverage)	0
HIV+ receiving ART	+1
OPD per Capita	+1
Institutional MMR	-1
TB treatment success rate	0
Thematic Area 2 total	1

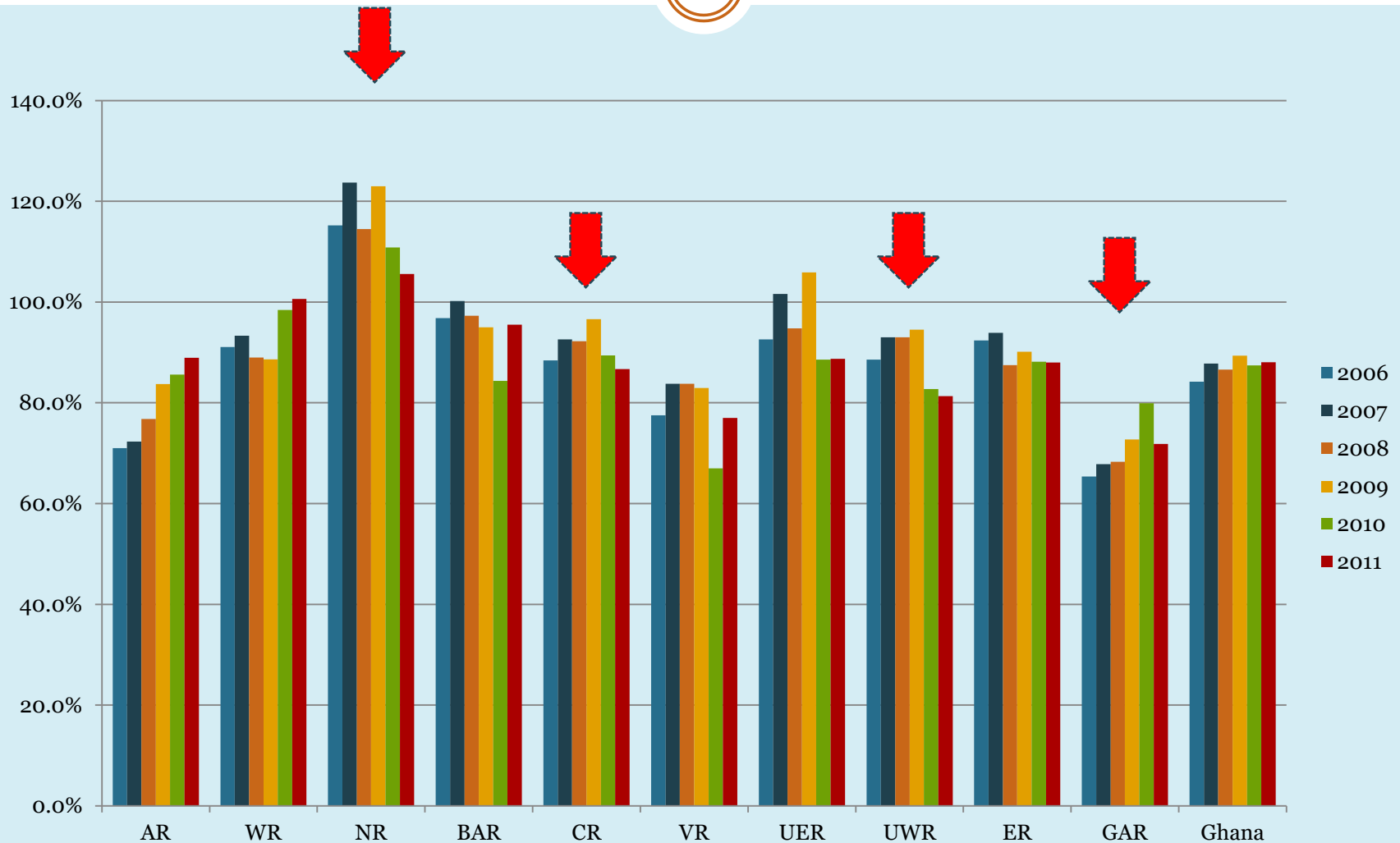
Supervised deliveries 2006-2011

23



Penta 3 coverage 2006-2011

24



Summary Thematic Area 3-4

25

THEMATIC AREA 3

Milestone: Revised staffing norms and deployment plan developed and implementation begun	-1
Milestone: Leadership and management in-service training initiated	-1
% population within 8 km of health infrastructure	n/a
Doctor to population	+1
Nurse to population	+1
Thematic Area 3 total	0

THEMATIC AREA 4

Milestone: Community mental health strategy developed	-1
% MTEF on health	+1
% non-wage recurrent to districts	+1
Per capita expenditure on health	+1
Item 3 budget execution rate	-1
% item 2+3 disbursed by end June	+1
% population with valid NHIS card	0
% NHIS claims settled within 4 weeks	-1
% IGF from NHIS	+1
Thematic Area 4 total	+2

Third Step

26

- **The sector's score**

- A positive sector score is interpreted as a highly performing sector
- A negative score is interpreted as an underperforming sector
- A score of zero is considered to be sustained performance.

Holistic performance

27

	2008	2009	2010	2011
GOAL 1 – IMR, U5MR, MMR	n/a	n/a	n/a	n/a
GOAL 2 – HIV, Guinea Worm	0	0	+1	+1
GOAL 3 – Equity	+1	0	+1	+1
THEMATIC AREA 1 – Health Lifestyle, W&S	+1	-1	n/a	n/a
THEMATIC AREA 2 – Health, reproduction, nutrition	+1	+1	+1	+1
THEMATIC AREA 3 – Capacity development	0	+1	+1	0
THEMATIC AREA 4 – Governance and financing	+1	+1	+1	0
SECTOR SCORE	+4	+2	+5	+3

Dry-run based on HSMTDP

28

	2011
HO1: Bridging equity gaps in access to health care and nutrition services, and ensure sustainable financing arrangement that protect the poor	+1
HO2: Improve governance of the health system	+1
HO3: Improve access to quality maternal, neonatal, child and adolescent services	0
HO4: Intensify prevention and control of communicable and non-communicable diseases and promote healthy lifestyles	+1
HO5: Strengthen institutional care, including mental health service delivery	-1
SECTOR SCORE	+2

Conclusion of the HA

29

- **The holistic assessment 2011 scores the sector performance as ‘highly performing’, with a total score of +4**
- Significant increase in number of nurses, midwives and doctors
- Equitable distribution of staff improved, but especially NR is still understaffed
- Supervised deliveries > 55%. Improved in all 10 regions
- OPD per capita > 1 per year for the first time
- Coverage of FP slightly improved but large regional variations
- Five regions had worrying decline in Penta 3 coverage
- iMMR increase by >50% in KBTH and KATH

Region of Excellence

30

A REGIONAL *HOLISTIC ASSESSMENT*

Region of Excellence

31

Region	Score	Penta 3	ANC 4+	Skilled delivery	FP acceptors	OPD/capita	iMMR	TB treatment
WR	6	0	1	1	1	1	1	1
CR	6	1	0	1	1	1	1	1
UER	5	0	1	1	0	1	1	1
BAR	4	1	-1	1	1	1	1	0
UWR	3	0	1	1	-1	1	1	0
VR	3	1	-1	1	1	1	1	-1
AR	2	0	-1	1	1	1	-1	1
ER	0	0	-1	1	1	1	-1	-1
NR	0	1	0	1	-1	0	-1	0
GAR	-1	-1	-1	1	-1	1	-1	1

Regions of Excellence

32

- Western and Central Region saw improvement in almost all selected indicators
- Western Region has introduced a number of activities targeted MDG 4 and 5

Regions of attention

33

- Greater Accra and Northern Regions' indicators worsened from 2010 to 2011
- The review team recommends specific support to the regions in identifying the causes of the worsening performance and rectifying

Recommendations – Holistic Assessment

34

- Analyse the causes for the observed worsening trend in institutional MMR
- Explore opportunities for examining the distribution of uptake of OPD services in the population as part of population based survey
- Perform together with the RDHS of GAR and NR an analysis of the region's and district specific performance vis-à-vis all sector-wide indicators
- Revisit the HSMTDP sector wide indicators, their definitions, sources and groupings, to develop a new holistic assessment tool for subsequent assessment





•

37





Thank you

scoring

40

- An indicator increasing by more than 5% of the previous year's performance is assigned the value of one.
- If decreased by more than 5%, minus one (-1) is assigned
- With previous year's performance of 50%, a 5% increase will be $5/100 * 50 = 2.5$
- 5% increase in ensuing year's review would therefore be: $50 + 2.5 = 52.5$

- If performance is within 5% range, = 0
- If indicator has experienced negative trend but above ideal target, = 1
- If no data is available, = -1